

Manual

Diablo Cam Programming

DIABLO CAM

To programm your Diablo Cam you will need the following components:



Interface CAS2 / CAS3



PC



Diablo Cam2

Please follow the instructions step by step:

1. First download "Cas Studio" from Duolabs website
<http://www.duolabs.com/casstudio.html>
2. Install this software on your system.
All necessarily drivers are already included.
3. Connect your Cas Interface with your computer using a USB cable.
4. Slide the Module into the CI Interface of your cas interface.



5. Start Cas Studio Software.
6. Pick the tab „Cam Module“
7. Click on “Diablo Cam”
8. Choose the module type you are about to programm.
In our case Diablo Cam 2.

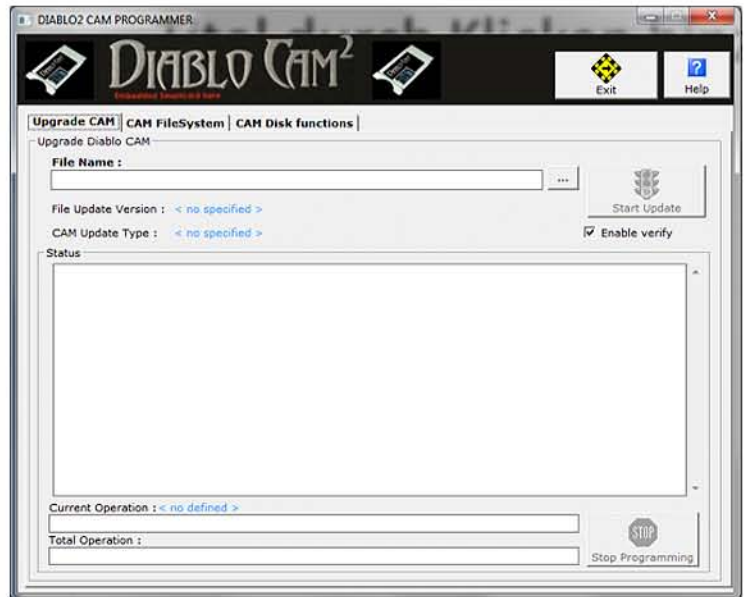


Manual

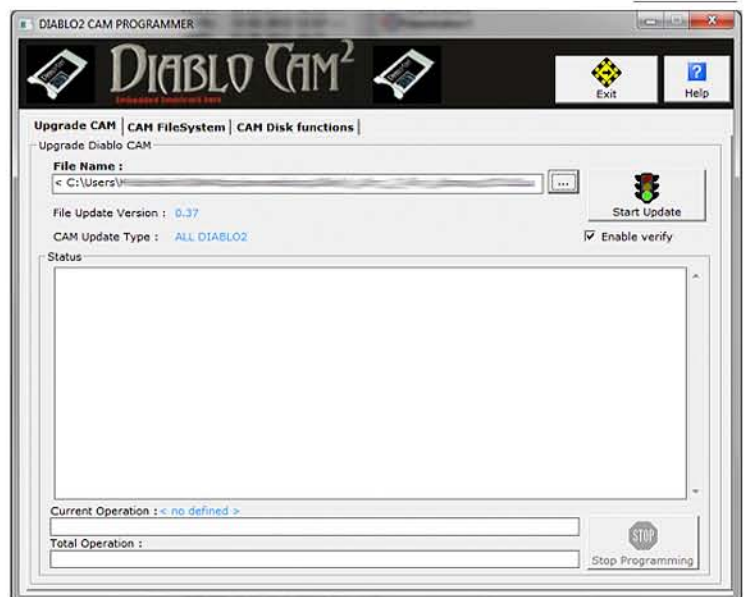
Diablo Cam Programming

DIABLO CAM

- This window appears on your screen. Click on the three dotted button right of file name field and choose your firmware.



- Click on Start Update. The process begins. At the bottom side of your window you can see a status bar that informs you about the progress.



- After the process is finished, click on OK and quit the program.

- Take your module out, it is ready for using now.

